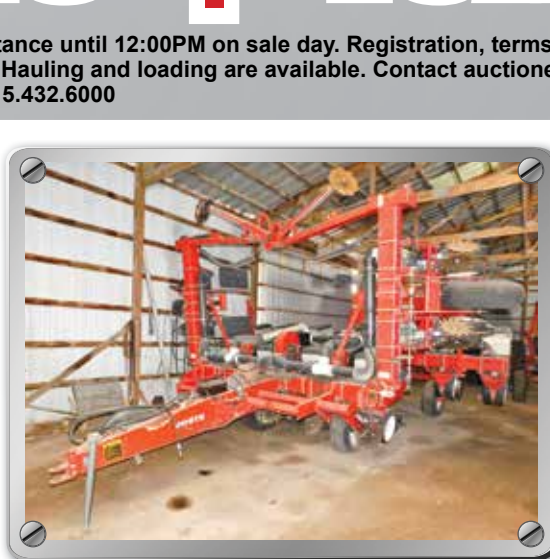
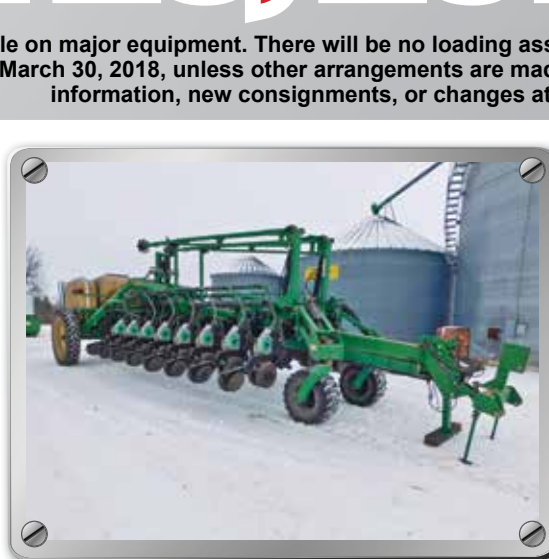
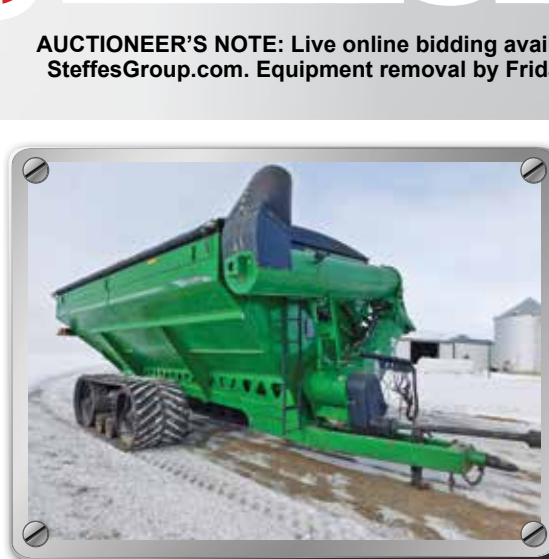


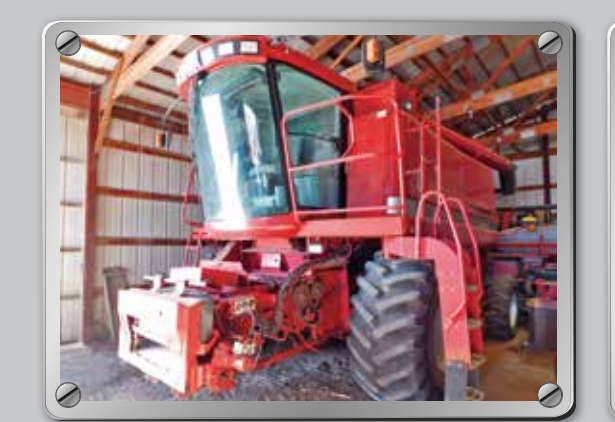
Agtron[®] Ames, IA

FRIDAY, MARCH 23, 2018 | 10AM

Located at the Farm Progress Site,
1827 217th Street, Boone, IA.
9 miles west of Ames
on Highway 30, Exit 137.



AUCTIONEER'S NOTE: Live online bidding available on major equipment. There will be no loading assistance until 12:00PM on sale day. Registration, terms, and details at SteffesGroup.com. Equipment removal by Friday March 30, 2018, unless other arrangements are made. Hauling and loading are available. Contact auctioneers for owner information, new consignments, or changes at 515.432.6000



Retirement Auction from Gerry & Doug Lindmark Stratford, IA - 515.230.3056

TRACTORS

2001 Case-IH STX275, 5,115 hrs., 4x4, powershift, deluxe cab, buddy seat, 4 hyd., 1000 PTO, LHR, S/N JEE0097739
Case-IH 7140 Magnum, 5,422 hrs., MFWD, powershift, 3 hyd., 3 pt., 1000 PTO, quick hitch, 6 front weights, 18.4x38 rear duals, 385/85R30 front tires

COMBINE

2002 CASE-IH 2366, 1,474 sep/2,063 eng hrs., 2wd, Field Tracker, Axial flow, Y&M, rock trap, J&M hopper extensions, 30.8 single tires, S/N JJC0255575

HEADS - HEAD TRAILERS

2004 CASE-IH 2206, corn head, 6x30", S/N HAJ035333
2006 CASE-IH 1020, flex head, hyd. fore/aft, 25', full fingered, S/N CBJ029234
EZ Trail 672, 25', Single axle
Head cart, 15', single axle, shop built

TECHNOLOGY

CASE-IH FM-78 display, WASS
CASE-IH FM-750 display, WASS

PLANTER

2003 CASE-IH 1200, bulk fill planter, 12x30", draw bar, center fold, tri-fold marker, pin adjust shark tooth row cleaner, spring DP, 1000 PTO pump, new hoses, (\$6500 in shop work Spring 2017) S/N CBJ0001719

SEED TENDER

Friesen 240, seed tender, tandem axle, 180 deg pivot belt conveyor, Honda GX160 5.5 HP gas engine, lights, brakes, 24.5-32 diamond tread tires, S/N 20956

SPRAYER

Bestway Field Pro III, pull-type sprayer, 60' boom, 1000 gal, eductor, S/N 17131-04

TILLAGE

CASE-IH Tiger-Mate II, field cultivator, 32', 6" spacing, 9" bolt on sweeps, tandems across, single pt. adjust, adjust gauge wheels, 4 bar coil tine harrow, S/N 10658

DMI Ecolo-Tiger 530B, disc ripper, 5 shank International, disc, 21'

Bush Hog, chisel plow, 15'

CASE-IH 1830, row crop cultivator, 12x30", 3 pt., row crop shields

International, 5 bottom plow, vari. width
MC 180SB, stalk chopper, 6x30", 1000 PTO, S/N 55274

GRAIN CART

Parker 624, grain cart, 600 bu., corner auger, small 1000 PTO, 24.5-32 diamond tread tires, S/N B19 410 122

GRAIN TRUCK

International Loadstar 1700, single axle, 404v gas engine, 5/2 transmission, w/ tag cheater straight truck, 16' steel box, wood floor, tri-door end gate

WAGONS & AUGERS

Westfield MK100-71, swing hopper, 10' x 71', 540 PTO, hyd lift,
Westfield WR100-31, truck auger, 10' x 31', steel intake hopper, S/N 255274

EQUIPMENT

Farmhand 815, grinder mixer
Kools K B-57, silage blower
Red Devil, snow blower, 540 PTO, 2 stage, hyd. spout, hyd. swivel, dual auger

LIVESTOCK EQUIPMENT

Smidley Cattle Stuffer, self feeder
Guard Rail (several lots of highway guardrail)

SPRAYER

2011 John Deere 4830, approx. 1,300 hrs., self-propelled sprayer, 100' boom, 1000 gal., w/ 3" fill, SS tank, Deluxe Command view cab, Field Vision Xenon Light pkg., 20" spacing, John Deere high lift pkg., auto air spring leveling system, SS eductor, BoomTrac Pro 5 sensor system, traction control, autotrac ready, radar, underframe shields, fence row RH, hydraulic tread adjust, foam marker, row crop fenders, 380/90R46 tires, S/N 1N04830XPA0013344

SKID LOADER & FORKLIFT

2016 John Deere 326E, 614 hrs., skid steer, 2 spd., cab, no door, 78" construction bucket, self leveler, power quick tach, cold start pkg., S/N 1T0326EBPGJ295560

Toyota 7HBW23 electric pallet jack, Type E, 24DVC, 42" forks, 12 cell 24V battery, on board 120V charger, S/N 7HBW23-30829

NEW HOPPERS

1.5 cu. yd. stackable self dumping hopper standard duty, 4,000 lb. cap.
2 cu. yd. stackable self dumping hopper standard duty, 4,000 lb. cap.

PLANTERS

2007 Great Plains, bulk fill planter, 16x30", 3 pt., bi-fold marker, 90 bu. hopper, 150 bu. hopper available, (2) 200 gal liquid fert. tanks, dual spring DP, rubber closing wheels, manual drive, 1/2 width disconnect, in furrow liquid, Ace hyd. drive liquid pump, seed firmers, Precision finger pickup corn meters, GP bean meters, 380/90R46 tires

White 6100, 8/15 x 15", w/ 6900 splitter, pin adjust shark tooth row cleaners on com units, spring down pressure, rubber closing wheels, WFE SM 3000 monitor, corn disc, soybean disc S/N 604381

TILLAGE

John Deere 960, field cultivator, 32', single pt. depth control, 3 bar harrow
Salford 570-30, vertical tillage, 30', 3 section, rolling basket, S/N 092340ML

2011 John Deere 512, disc ripper, 9 shank, single pt. adjust, 100" pts., S/N 1N00512XAB0740193

John Deere 1350/1450, plow, 4 bottom, 2 pt., gauge wheel

MANURE PUMPS

Van Dale BODCO-J-STAR, 9', 2 pt., 1000 PTO, 2 nozzle, S/N 4406

Douda Vert 150, 10', 2 pt., 1000 PTO, single nozzle, S/N 2-77H

HAY EQUIPMENT

Vermeer 554XL, round baler, 4' x 5.5', twine & net wrap, w/ Accubale, 2353 bales, Vermeer Accu-Bale monitor, 13.5-15 F1 tires, S/N 1YRV131J711000388

Hoelscher 1000, bale accumulator, 10 bale, came off NH 273 baler, S/N 03963

Hoelscher 1000, bale fork, 10 bale pick up, NH loader attachment

2015 Top Notch, bale shredder, skid steer mount, hyd. drive, low flow & high flow tips

EQUIPMENT

New Holland 355 grinder mixer, S/N 683213

Batco 1331, 13' x 31', belt conveyor, hyd. motor

Red Devil 9664D, snow blower, 8', 3 pt., 540 PTO, 2 stage, hyd. swivel

30"x90" Cattle & calf feeder, New

SERVICE TRUCK

2008 Dodge Ram 4500, 138,600 miles, Quad Cab, 2WD, 6.7L Cummins (R) turbo diesel, 6 spd., automatic, cloth, 40/20/40 bench, GVW 16,500 lbs., exhaust brake, block heater, power windows, locks & driver seat, anti-spin differential rear axle, stainless service box includes pressure washer & 300 gal. water tank, Alkita 530SEA gas pressure washer w/ hot water, Vanguard commercial 18 hp motor, electric start, VIN 3D6WC68A08G135949

GRAIN CART

Brent 1194, spout light, lg. 1000 PTO, Unverferth Digi Star 410 scale head, (2) Cab Cam cameras mounted on auger & back, 36" tracks, S/N B2959012

SEMI TRAILERS

2007 Wilson DWH 500, hopper bottom, 43' x 96" x 72", tandem axle, non ag hoppers, air ride, AL back, Shurco 3500 Series electric tarp, w/ remote, Shurco PROTRAP openers w/ remote, 455/55R22.5 on super singles, VIN 1W1MBF1A87A246360

2000 Utility, van trailer, 53' x 96" x 102", tandem axle, air ride, VIN 1UYV52538YC087818

TECHNOLOGY

John Deere StarFire ITC globe, S/N PCGT01C532196
John Deere 2600 display, SF-2, S/N PCGU26188905

NEW SKIDSTEER ATTACHMENTS

Stout XHD 84-6 brush grapple
Stout HD 72-FB grapple bucket
Stout 72-8 brush grapple
Stout 72-3 rock bucket grapple
Stout 66-9 brush grapple
Stout tree & post puller
Stout regular pallet forks, 48"
Brute rock bucket, 66", 4" tine spacing
Brute rock bucket, 75", 4" tine spacing
Brute rock bucket, 80", 4" tine spacing
Brute rock bucket, 85", 4" tine spacing
Brute skeleton grapple, 66", 4" tine spacing
Brute skeleton grapple, 75", 4" tine spacing
Brute skeleton grapple, 80", 4" tine spacing
Brute skeleton grapple, 85", 4" tine spacing
Brute root grapple, 70", 8" tine spacing
Brute root grapple, 80", 8" tine spacing
Brute tine grapple, 72", 10" tine spacing
Brute tine grapple, 82", 10" tine spacing
(2) **Brute** tree/post puller, up to 8" diameter
(2) **Brute** brush mower, 72", cuts up to 3" trees
(2) **Brute** receiver hitches
(2) **Brute** pallet fork extensions, 84"
(4) Universal quick attach plates
Skid steer attach frame
Fork extensions, 84"
Fork extensions, 72"
HD snow pusher, 96"

FENCING & EQUIPMENT

(60) 20' 6 bar continuous fence panels w/ clips & connections, New
(20) 12' Interlocking corral panels, New
John Deere Computer Trak 250 monitor, w/ extension harness
John Deere 1700 transmission
(16) Pro40 seed discs
(16) JD small seed plates 30
(16) JD down pressure double springs, heavy duty, off JD 1770 NT
(16) JD cable drives
Weed Eater
Hyd. Pump
Heavy Duty 30"x57" welding shop table w/ shelf, New
29"x90" Work bench, New
3/8 AR500 Spinner, Gong & Dueling Tree shooting targets, New
1976 Yamaha 250, 2 stroke, (does not run)
Airco generator/welder, 200 amp, gas



Doug Rose
Inventory Reduction
Ankeny, IA - 515.669.9969

4WD TRACTOR
1992 Case-IH 9280, 6,351 hrs., powershift, BB, 24 rear weights, 20.8R42 duals, S/N JCB0029202

PLANTER

John Deere 7200, 16x30", 2 pt., tri-fold, vacuum, insecticide box, Yetter shark tooth row cleaners, rubber closing wheels, corn & soybean disc, S/N H07200D502085

SEED TENDER

Friesen 240RT, seed tender, tandem axle, bumper hitch, 2 5/16" ball, 180 deg pivot belt conveyor, Honda electric start gas engine, 235/80R16 tires, S/N 38416

RIPPER

M&W 1875, disc ripper, 7 shank, 3" tips, 4 bar coil tine harrow, S/N 13724

ATTENTION

CONSIGNMENTS ACCEPTED ON:
Monday, March 12th - Friday, March 16th from 8am-5pm
Saturday, March 17th from 8-Noon
CONSIGNMENTS ON THE LOT BY SATURDAY, MARCH 17TH
NO CONSIGNMENTS TAKEN starting Monday, March 19th

LOAD OUT SCHEDULE:

All items to be removed within 7 days.
Load out assistance after auction are:
Saturday, March 24th, 8am - 12 Noon
Monday, March 26th, 8am - 5pm

All other load out times are by appointment only, PLEASE CALL OFFICE TO SCHEDULE!



ONLINE BIDDING
SteffesGroup.com



Details at SteffesGroup.com

PLEASE NOTE: There will be no loading assistance until 12pm on sale day. Cars and pickups may enter grounds at 12 Noon for self loading.
TERMS: All items sold as is where is. Payment of cash, check or credit card must be made sale day before removal of items. Statements made auction day take precedence over all advertising. \$35 documentation fee applies to all titled vehicles. Titles will be mailed. IA Sales Tax laws apply. Canadian buyers need a bank letter of credit to facilitate border transfer.